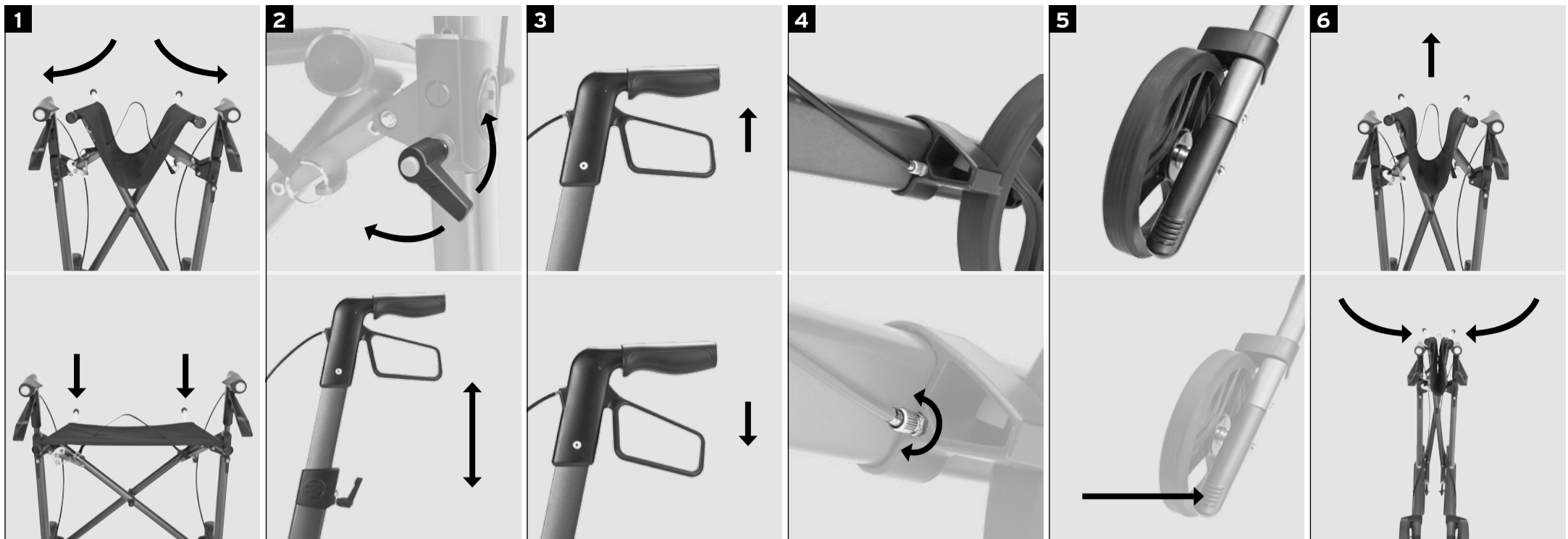


## The brado - Simple and easy to use



### 1. Setting up/unfolding your rollator

Place the rollator in front of you in the direction of travel and put the parking brake on.

Using both hands, press the tubes on either side of the seat down to the left and right until the folding mechanism clicks into place.

Then attach the mesh bag, bag or basket to the appropriate fittings.

### 2. Adjusting the handle height

Loosen the set screw by turning it five or six times (it does not have to be removed completely). Then slide the push handles up or down to the height that suits you best.

The push handles click into place every 25 mm.

When you have found a comfortable height, tighten the set screw again. Do not tighten it at a position between the 25 mm increments. Once it has been tightened, the set screw can be pulled out into a vertical position so that it does not get in the way.

### Safety information

Do not hang bags on the handles as this could cause the rollator to tip over.

Use the service brake (by pulling the brake lever up) on inclines.

Only use the rollator on firm, flat surfaces.

Do not lean too heavily on the handles. Otherwise, the rollator could tip over backward.

Be careful not to trap your fingers or clothes when folding up the rollator.

Upholstered parts become hot when exposed to direct sunlight and can cause damage to the skin if you touch them. These parts should be covered over. Alternatively, keep your rollator away from direct sunlight.

### 3. Brakes

**Service brake** (when pushing): Pull the brake lever up.

**Parking brake** (for parking): Press the brake lever down.

### 4. Brake settings

The brake is set correctly if there is no play in either the brake lever or the Bowden cable and if the wheels turn without rubbing or grating.

The braking strength can be adjusted using the set screw on the Bowden cable for the brake blocks on the back wheel.

### 5. Curb climber

Pressing your toe down on the extended frame makes it easier to lift the front wheels (to negotiate curbs, for example).

### 6. Folding up your rollator

Remove the mesh or other bag from the frame.

Pull the locking strip in the middle of the seat upward to fold up the rollator.

### Cleaning/maintenance/reuse

#### Cleaning

Clean and disinfect the rollator at regular intervals. To do so, use mild soapy water with no scouring additives.

You can disinfect the rollator using commercially available products. Never use steam degreasers. Never use scouring or caustic cleaning agents.

#### Maintenance

The brado rollator requires no maintenance. If the braking function weakens, wheel movement becomes stiff or you notice any other functional impairment, please take the rollator to your specialist dealer for servicing.

#### Reuse by third parties

If you pass on your rollator to a new user, please remember also to hand over all the technical documentation needed to ensure safe operation. In accordance with specifications, the rollator must first be inspected, cleaned and returned to pristine condition by a specialist dealer.

## The brado at a glance



- 1 Ergonomically formed handles
- 2 Brake lever
- 3 Seat and strap
- 4 Hook to mount bag
- 5 Set screw to adjust height
- 6 Curb climber
- 7 Brakes
- 8 Tires



## Technical data

	Type S/M	Type S	Type M
Height:		67-82 cm	78-102 cm
Height when folded:		67 cm	78 cm
Seat height:		52.5 cm	62.5 cm
25-mm height adjustment increments for push handles:		0-15 cm	0-24 cm
Adjustable frame height:		8 x	10 x
Length:	66 cm		
Width:	60 cm		
Width when folded:	22 cm		
Max. user weight:	150 kg		
Max. mesh bag/bag weight:	5 kg		
Dead weight:	7.1 kg		
Tires (accident-proof):	20 x 3 cm		

## Scope of delivery

- \_ brado rollator
- \_ Mesh bag
- \_ Instructions for use
- \_ Warranty card

## Instructions for use



## Warranty

The brado rollator has a five-year warranty on the aluminum frame and a 24-month warranty on all other parts.

Parts subject to wear are excluded from warranty.

## General information

The rollator described on this information sheet complies with EU Directive 93/42 for medical products.

These instructions for use are an integral part of the scope of delivery. The user should keep them available at all times and keep them with the product if this is passed on to a third party.

The manufacturer reserves the right to make changes relative to the information provided in these instructions as a result of technical developments and improvements.

This document may be reprinted, translated and/or duplicated in any form whatsoever, in part or in full, only subject to the manufacturer's prior written consent.

There is no update service for these instructions for use. Please contact the manufacturer to keep abreast of new developments.

## Specifications and intended purpose

The brado rollator is intended as a walking aid for persons with impaired mobility who weigh up to 150 kg. It also provides a limited seating function for temporary rest.

The mesh bag below the seat is intended to carry objects and shopping. Please do not sit on the mesh bag.

The brado rollator should be used only on firm, flat surfaces. It is not intended to be used for any other purpose - in particular as a climbing aid or to carry heavy loads. Any such use can be dangerous!