

# Technical Manual



DIGITAL

# Bure<sup>TM</sup>

## StandTall Walker

Bure Standard EL 56-312T

Bure S EL 56-302T

Bure Low EL 56-321

Bure Low S EL 56-321-S

**GATE**  
REHAB DEVELOPMENT AS



# Parts list

<b>1</b> <b>A</b> Armrest <b>B</b> Knob <b>C</b> Plastic washer <b>C</b> Washer, black	<b>5</b> <b>K</b> Frame <b>L</b> Guide sleeve	<b>8</b> <b>V</b> Battery shelf + attachment bolts <b>W</b> Battery + nut/bolt (for attachment to battery shelf) <b>X</b> Control box (Ti-Motion) <b>Y</b> Remote control (Ti-Motion) <b>Z</b> Actuator (Ti-Motion)
<b>2</b> <b>D</b> Handle and grip <b>E</b> Clamp <b>F</b> Knob	<b>6</b> <b>M</b> Protective cover <b>N</b> Bolts	
<b>3</b> Upper frame	<b>7</b> <b>O</b> Wheel frame <b>P</b> End bushing <b>Q</b> Wheel <b>R</b> Bolt <b>S</b> Washer <b>T</b> Nut <b>U</b> Lockwasher	
<b>4</b> <b>G</b> Chromium-plated tube <b>H</b> Attachment bolt (2 pcs) <b>I</b> Serrated washer <b>J</b> End bushing		

## Spare parts

No.	Part no.	Description
-	56-305	Touch-up paint Bure, Silver 8
Y	56-328	Holder, hand controller (EL only)
L	56-340	Guide sleeve
G	56-341	Standard guide tube/chrome
G	56-341	Standard guide tube/chrome (LOW)
J	56-343	End piece, guide tube
P	56-344	End piece, lower frame, Black/D45
W	58-376	Ti-Motion- Battery
Z	58-377	Ti-Motion- Actuator (raise/lower)
Z	58-377	Ti-Motion- Actuator LOW (raise/lower)
X	58-373	Ti-Motion- Control box 220 V
V	56-351	Battery shelf Std (EL only)
O	56-352	Lower frame, Bure Std
O	56-300-2	Lower frame, Bure S
K	57-301	Top frame
K	57-301-Low	Top frame (LOW)
2	56-353	Handle kit, Bure Std (2 pairs incl. lock knob/clamps)
-	56-357	Wheel without brake 100 mm
-	56-358	Wheel with brake 100 mm
-	56-360	Wheel without brake 125 mm
-	56-387	Wheel with brake 75 mm
Q	56-361	Wheel with brake 125 mm
F	56-363	Knob for adjusting handle
B	56-364	Knob for adj. width of armrest plates
A	56-366	Armrest, right, Bure Standard/S
A	56-367	Armrest, left, Bure Standard/S
Y	58-374-1	Ti-Motion- Hand control (raise/lower)
M	56-375	Protective cover, plastic, Bure Standard
-	58-326	Power cable, coiled, Ti-Motion
-	58-326-1	Power cable, coiled UK
-	58-326-2	Power cable, coiled US
-	58-326-3	Power cable, coiled AUS
C	57-904	Washer, nylon
D	57-918	Washer, black

## Accessories

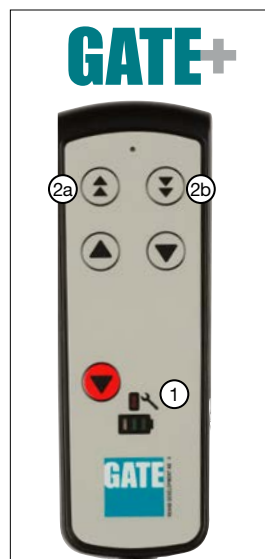
Part no.	Description
56-339-1-0	Handbrake kit/2 handles
56-339-1-1	Handbrake kit, one-handed brake
56-327	Frame elevation kit 70 mm
56-331	Stirrup
56-333	Footplate, Bure Standard (plate)
56-333-(SW)-STD	Platform short
56-383-(SW)-STD	Platform long
56-334	Drip holder
56-335	Attachment for drip holder
56-336	Oxygen holder
56-337	Side support, adjustable
56-338	Drip rod complete with attachment
56-389	Soft basket with attachment, Bure Standard/S
56-061	Remote control PLUS (TH10) including Holder

## Remote Control Plus

**\*\*1.** Service indicator – flashes red after 11 months' operation. Constant light (red) after 12 months' operation. The indicator is a reminder to review the maintenance instruction (see Instructions for Use/Technical Manual. This should be done at least once every 12 months.

Reset: hold down buttons <2a> + <2b> for at least 30 seconds.

**\*\***The indicator will go out around 30 seconds after the remote control is activated (battery conservation function).



## Other instructions – Ti-Motion



### Control box wiring

Remove the control box cover to make the connections as described below. Use a screwdriver or similar; refer to the special labels on the control box. NOTE! Make sure that plugs are connected to the correct sockets otherwise the actuators may be damaged.

1. Socket for the raise/lower actuator. NOTE! Make sure that plugs are connected to the correct sockets otherwise the actuators may be damaged.
2. Remote control socket.
3. Battery terminal socket.
4. Plug socket. NOTE! Plugs must ALWAYS be connected to the control box for IP classification to be valid.

### Battery charging

Connect plug to 230V wall socket. Charging begins automatically and the battery LED flashes green.

Make sure the battery is fully charged before using for the first time. It takes around 25 h to fully charge the battery.

We recommend that the battery plug be removed from the control box if the product will be out of use for an extended period (more than one week) or if the battery is switched off by means of the ON/OFF switch. This eliminates the risk of disabling the battery as the control box always uses a small quantity of electricity even when the walker is not in use.

### LEDs on control box and battery

- Control box – green light when power is available from battery/mains socket.
- Battery:
  - The LED flashes green during charging.
  - ON/OFF: To use the product, press ON.
  - The green lamp will begin to flash.
  - Use the OFF button (hold down for 5 s) to switch off the battery if the product will not be used for an extended period.
  - The LED will show a constant green light when the battery is fully charged.
  - When the battery is in normal state/in operation, the LED flashes green at REGULAR intervals, namely 0.5 s ON, 4 s OFF.
  - When the battery requires charging (remaining charge <25%) the LED will flash orange/red at REGULAR intervals, namely 0.5 s ON, 4 s OFF.



**NOTE!** The battery has an in-built device that automatically switches it off when remaining charge is <20%. The LED is then extinguished. The battery must now be fully charged before the electronics can be used again.

## General maintenance advice



- Wipe the walker and its armrests clean as necessary; use soap solution/ surface disinfectant.
- The product may be cleaned in a tunnel washer or similar as electrical systems have IP65 protection. However, the product is not corrosion proof which means washing by machine may reduce its lifetime.
- Replace damaged parts immediately; must be done by experienced personnel.
- The product is only intended for indoor use.

## Safety instructions

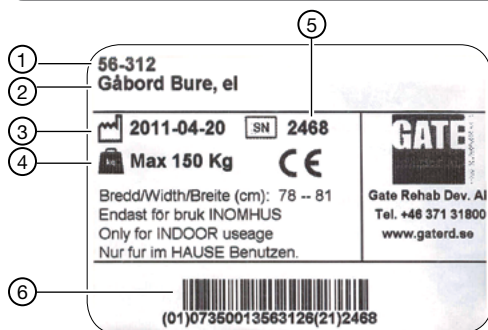


The Bure Walker may only be used:

- as a WALKING AID, indoors
- on HARD, LEVEL surfaces.

**MAX USER WEIGHT: 150 KG**

## ID label



1. Part number
2. Product name
3. Date of manufacture
4. Max user weight
5. Serial number
6. EAN code

## Recycling/Scrapping

When the product is no longer usable it should be recycled in accordance with legislation and regulations in the country concerned. All electrical parts including batteries must be removed and recycled as electrical components. (Ask your local recycling station for further information about how the different materials in the product (metals, plastics, electronics) should be recycled).

## Warranty

We provide two years' warranty for manufacturing faults (does not apply to wear parts). For further information or enquiries please contact:



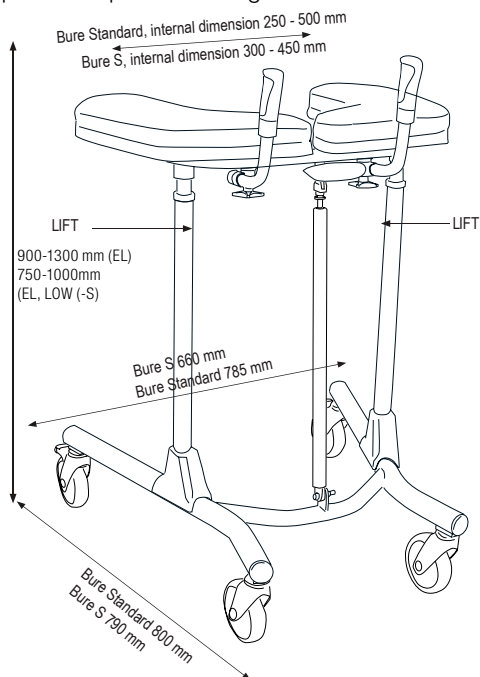
Gate Rehab Development AB  
Industrigatan 2, SE-330 21 Reftele  
Tel: +46 371 31800  
info@gaterd.se

# Dimensions

	ELECTRIC	ELECTRIC, LOW
<b>Product weight</b>	21 kg	19 kg
<b>Product height</b>	900–1300 mm	750–1000 mm

“LIFT” denotes suitable handhold for lifting the walker

NOTE! At least two people are required for lifting.



CE CE marked according to MDD 93/42/EEC.

The expected lifespan of this product = 8 years



**WE DO BETTER.**

Would you like to know more?

Contact us at: Tel: +46 371 31800  
Gate Rehab Development AB  
Industrigatan 2 | SE-330 21 Reftele  
info@gaterd.se | www.gaterd.se



**GATE COLLECTION**